

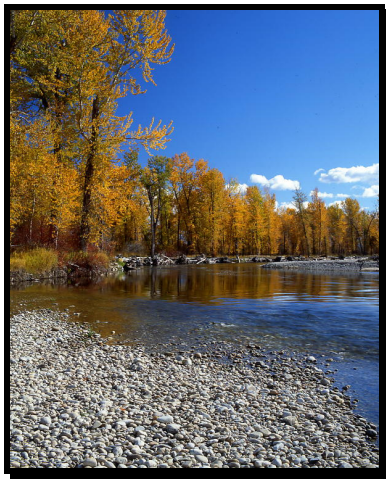
*Selway Corporation*  
*PO Box 287*  
*Stevensville, Montana 59870*  
*406-777-5471 fax 406-777-5473*

Selway Corporation is an AISC certified steel fabrication facility located in Western Montana, approximately 30 miles south of Missoula, Montana, in the community of Stevensville. We employ over 100 people both in the fabrication shops and the office.

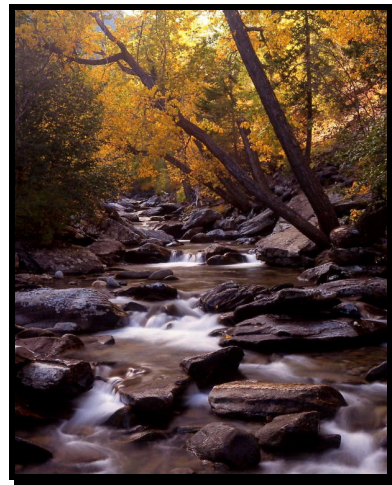
Our company has been here for more than 30 years and we have gone through several expansions and continue to grow. This area is one of the most beautiful areas of the state and provides limitless recreational opportunities. If you enjoy the outdoors and love fishing, hunting, hiking, skiing, photography and many other activities, it would be hard to find a better place. We offer a competitive wage, health and dental insurance, savings plan, paid holidays and vacation. If you would like steady employment in one of the “*Last Best Places*”, please consider Selway Corporation. For more about Selway Corporation please see our website at <http://www.selwaycorp.com> or contact Mark Boesch at [mboesch@selwaycorp.com](mailto:mboesch@selwaycorp.com).

For more information about Stevensville, please see this website.

<http://www.city-data.com/city/Stevensville-Montana.html>



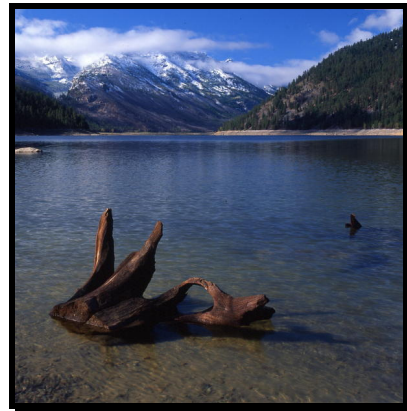
**Bitterroot River Stevensville**



**Kootenai Creek West of Stevensville**



**Bitterroot River Between Victor and Stevensville**



**Lake Como (area lake)**



**Selway Corporation' Fabrication Facility**

**Below are some of the projects we have built.**



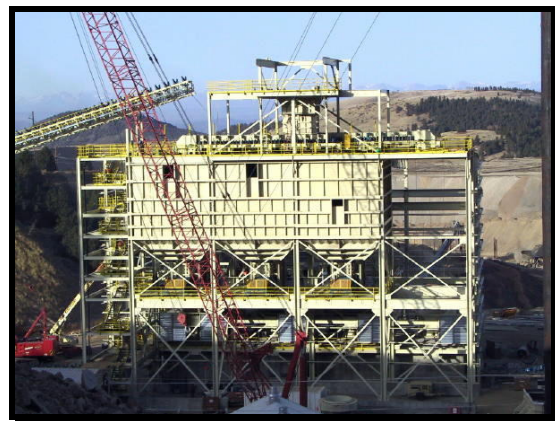
**Lower Section of Truck Dump Hopper for Coal**



**Bridge Tub Girders For Alaska Bridge**



**Tube Structure for USAF Hanger**



**Cripple Creek Coal Structural**